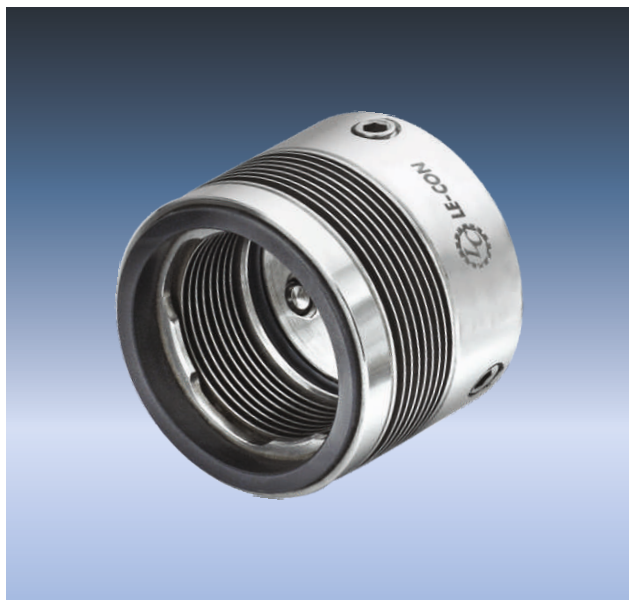




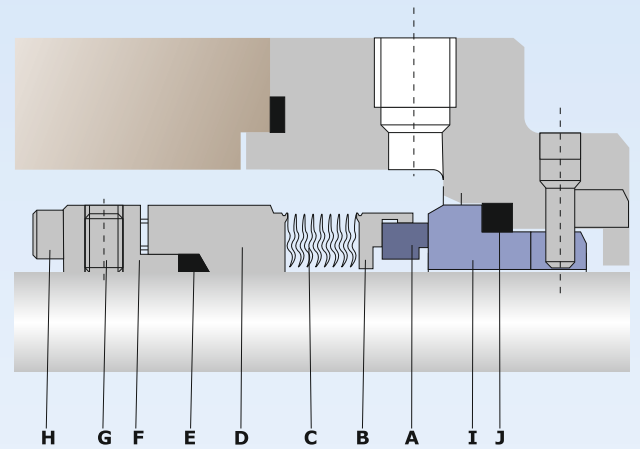
TYPE LMB-24

Type LMB-24 & LMB-20 seals specially designed for high temperature application and suitable for high start-up torque since the bellows unit is independent of torque transmission. Grafoil is used as a secondary member having excellent temperature range up to 400°C. Shrink fit seal face design minimize face distortion restricting leakage and wear rate to very low level under a wide range of condition.



TYPE LMB-20

Type LMB-20 seals are widely used in refinery, petrochemicals and chemical industries. Static o-ring is used as a secondary member. The absence of dynamic o-ring prevents possibility of seal hang-up.



Part No. Description

A	Seal Face
B	Face Housing
C	Bellows
D	Collar
E	Packing
F	Drive Collar
G	Grub Screw
H	Head Screw
I	Stationary Seat
J	Stationary Packing

Seal Characteristics

- ▶ Single Seal
- ▶ Balanced
- ▶ Independent of direction of rotation.

Operating Parameters

- ▶ Shaft Sizes d1 : 18...100mm
- ▶ Pressure p : 10 bar (max)
- ▶ Temperature t : -20...400°C
 -20...200°C (LMB-20)
- ▶ Speed v : up to 23 m/s

Materials

- ▶ Seal Faces : Carbon, SiC, Tung. Carbide
- ▶ Metal Parts : SS316, AM 350, Carpenter 20, Carpenter 42, Hastelloy-C
- ▶ Sec. Sealing : O-ring / Grafoil Packing

Applications

- ▶ High temperature applications
- ▶ Petrochemicals
- ▶ Refineries